

Different Styles Finding Neverland



Gary St. Martin - gary@conventionvideo.com - 619 253-2007

LOGLINE

While searching for a lost cat, a pair of mismatched private investigators discover a dead body and become embroiled in a murder mystery that soon connects them to an underground gang of dangerous drug dealers.

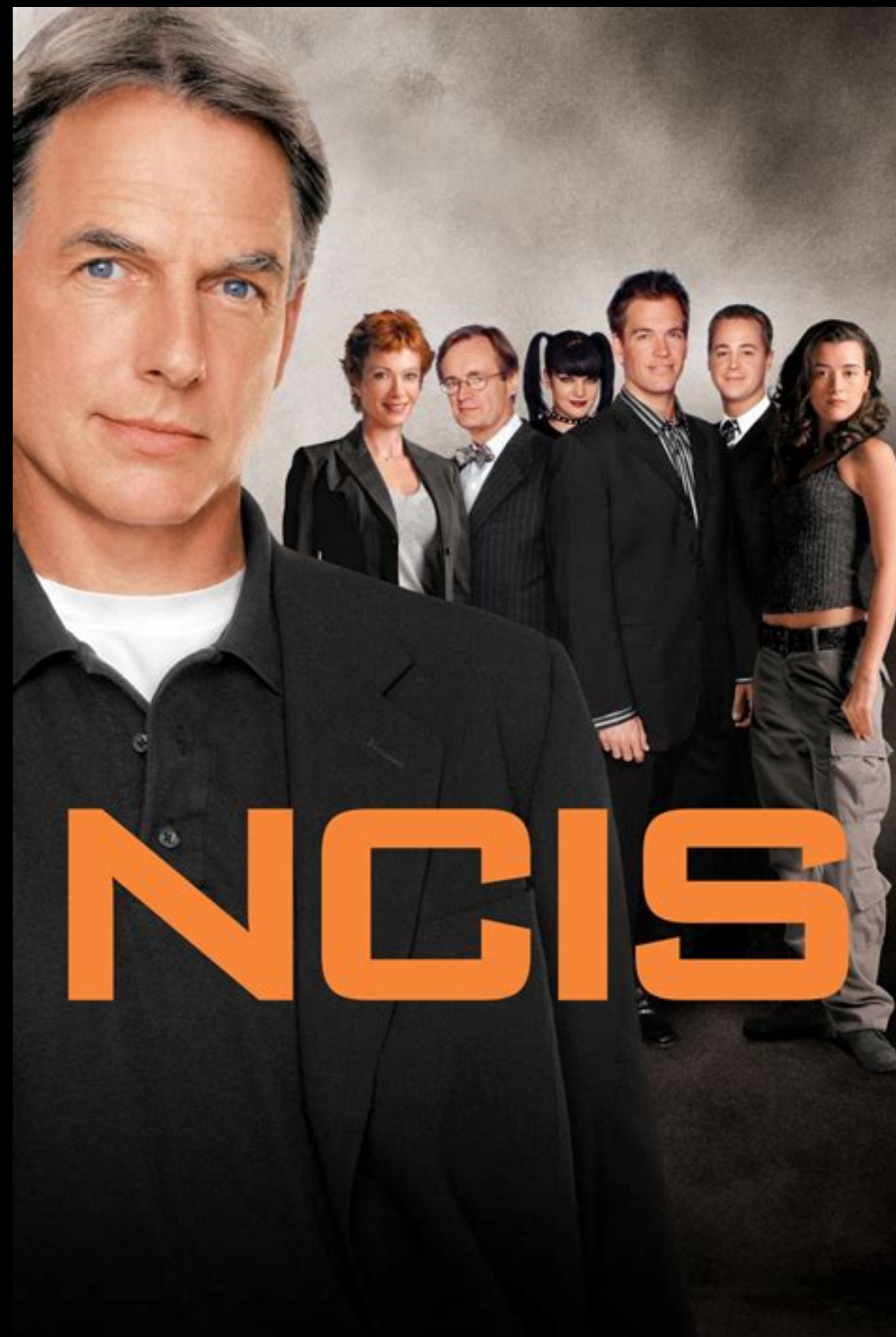
SYNOPSIS

ROBIN HICKS (38) and JILLS BROWN (51) are private investigators working in Los Angeles. Robin is tech-savvy and an expert hacker, while Jills is a retired police sergeant with little interest in modern tech. They partnered after Robin briefly dated Jills' son. Hired by BETSEY MILES to find her missing cat, the pair tracks down Betsy's ex-boyfriend, LARRY LAVENDER, suspecting him of taking the cat. While their hunch proves correct, they discover Larry has been killed. Luma and Morales discover fingerprints at Larry's hotel that lead them to LORENZO GOMEZ, a former gang member with a record.

When they visit Gomez, they discover Robin and Jills are there, as they have already learned Gomez is a person of interest. The four investigators confront Gomez, who admits to visiting Larry in the hotel the week before. He tells them he thought Larry was done with the drug dealers. Robin tells the cops about the Tracks and reveals she found a list of gang members online. Luma realizes the leader is DALE DOUGLAS, a criminal he's tangled with before.



SHOW CROSS



ROBIN HICKS

MAIN CHARACTER

Robin Hicks, 35, a fast moving techno genius.





JILLS BROWN

MAIN CHARACTER

Jills Brown, 61, doesn't own a phone, has a pager, owns a computer, but it's old and outdated, she never looks at it

DENNIS DOUGLAS

DENNIS DOUGLAS'S, 35, lead member of the gang

TOPO

TOPO, 41, tall, with dark, stringy hair

TERRY TECHA

TERRY TECHA, 27, long brown hair, thin, super hacker

LUCKY MIKE

Lucky Mike, 36, fast talker his right arm is inked soled

r

THE TRACKS





SERGEANT BRANSON

MAIN CHARACTER

Sergeant Branson, 55, tall and thin, with short cropped-hair, gruff looking, all business and head of the Idyllwild police department

PILOT

The pilot for "Different Styles Finding Neverland" does a great job of establishing its narrative world and throwing the audience right into the action. The script builds a strong mystery surrounding the death of Larry Lavender and often takes its time to show the detective work done by characters, allowing us to keep track of the deductions and the rising stakes.

The revelation that Dale and the Tracks have been eavesdropping is another good twist, and the second half of the episode turns into an engaging cat-and-mouse game as the criminals and investigators all try to outwit each other. The script also clearly establishes the concept for the series as it will center around the tech-savvy Robin and the analog Jills. Their age difference isn't extreme, but there's enough of a generational divide for there to be different perspectives.

EPISODE CONCEPTS

EPISODE 1: “First Case”

While searching for a lost cat, a pair of mismatched private investigators discover a dead body and become embroiled in a murder mystery that soon connects them to an underground gang of dangerous drug dealers.

EPISODE 2: “The Trail Heats Up”

A new lead is discovered and brings the girls back to Idyllwild

EPISODE 3: “the Jewelry heist”

A wave of Jewelry heist seemingly unconnected happen around the town.

EPISODE 4: “Here Comes The Circus”

The Girls are hired by a clown from the circus to investigate a mysterious death of one of his close friends while watching the performance.

EPISODE 5: “The Disappearance”

A couple hires the girls to look into the unsolved disappearance of their daughter. They think she is still alive.

EPISODE 6: “Internet Phishing Crimes”

A wave of Internet crimes involve the girls who then dig in to find out who's doing it and why..

tone

The pilot for "Different Styles Finding Neverland" does a great job of establishing its narrative world and throwing the audience right into the action. The script builds a strong mystery surrounding the death of Larry Lavender and often takes its time to show the detective work done by characters, allowing us to keep track of the deductions and the rising stakes. The plot twists in unexpected directions, beginning with the surprising way the hunt for Betsey's cat leads to the discovery of the body. The revelation that Dale and the Tracks have been eavesdropping is another good twist, and the second half of the episode turns into an engaging cat-and-mouse game as the criminals and investigators all try to outwit each other.

